

***PARTRIDGE FARMS* A DESIRED BERLIN, VT. LOCATION**



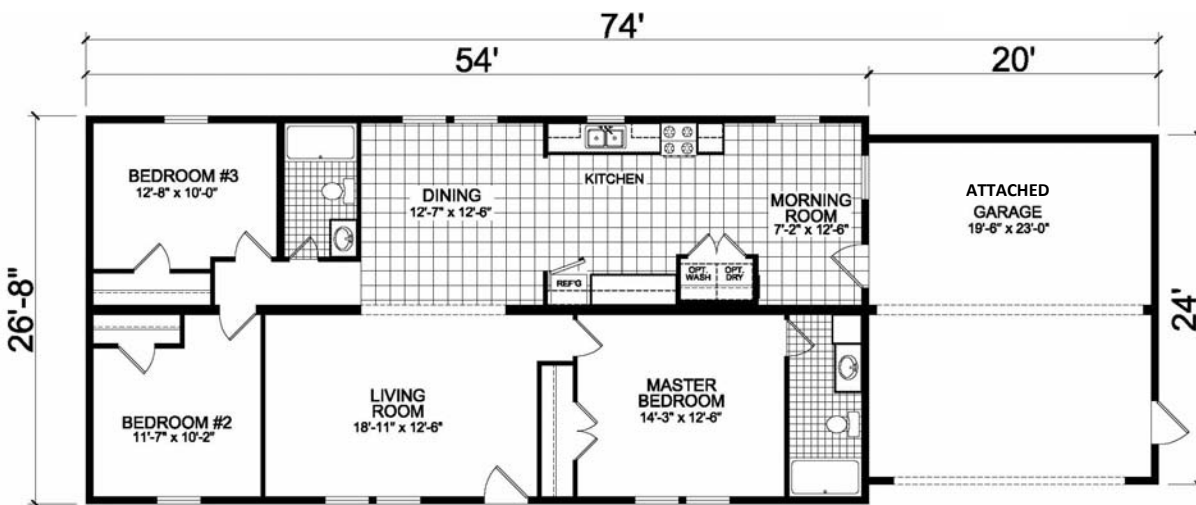
Likeness Only

CALL US OR STOP BY
VILLAGE HOMES
149 PARTRIDGE FARM ROAD
BERLIN, VERMONT 05641
OFFICE: 802-229-1592
GoVillageHomes.com

Located Across From
Walker Volkswagen



This Home To Be Built
In Partridge Farms
******INCLUDES******
LAND
FULL BASEMENT
COMPLETE NEW HOME
PAVED DRIVEWAY
GARAGE



Room Sizes Are Approximate
 Furniture Packages Available
 You Select Your Exterior Color
 Choose Carpet and Lino Color
 Choose Counter Top Color
 Includes Appliances

MODEL 0126-11 | 3 BEDROOM ▪ 2 BATHROOM | TOTAL LIVING AREA WITHOUT GARAGE 1440 SQ. FT.

COMPLETE PACKAGE \$196,900.00

GENESIS II MODULAR

STANDARD FEATURES

Vinyl Siding	6 lb. Rebond Carpet Pad
7/16" O.S.B. Sheathing	1 Piece 60" Fiberglass Bathtub(s)
House Wrap Over Exterior Walls	1 Piece Fiberglass Shower(s) with Door (Per Model)
Mate Line Gasket	Porcelain Bathroom Sinks with Pop-Up Drains
5/12 Roof Pitch	Polished-Edge Mirrors in Master and Hall Bathrooms
R-38 Roof Insulation (R-49 Roof Insulation Available)	Single-Lever Faucets-Bathroom Sinks, Bathtubs and Showers
Architectural Shingles with Shingles Over Ridge Vent	36" Vanity Height in All Bathrooms
Ice Guard	Elongated Toilet Stools
6-1/2" Fixed Overhangs	Single-Lever Faucet with Sprayer
60 PSF Snow Load 16" OC	Residential Stainless Steel Sink
Raised Panel Vinyl Shutters on the Front Door Side	Solid Wood Framed "Beaded" Flat Panel Square Top Kitchen and Bathroom Cabinet Doors (Raised Panel Available)
8' Sidewalls Flat Ceilings	Rope Molding Over Cabinets
2" X 6" Sidewalls 16" O.C. with R-19 Insulation	Shelf Over Refrigerator
2" X 10" Floor Joists 16" O.C.	Range Hood
Double 2" X 10" Perimeter Beam	Solid Wood Stiles at All Kitchen and Bathroom Cabinets
19/32" O.S.B. Tongue and Groove Floor Decking	Laminate Countertop Edge and 4" Laminate Backsplash Throughout
36" 6-Panel Steel Front Door with Storm	Adjustable Hidden Cabinet Door Hinges
36" 9-Lite Steel Rear Door with Storm	Lined Overhead and Base Kitchen Cabinets
Deadbolt Locks at Front and Rear Doors	Adjustable Shelves at Overhead Cabinets
60" Low-E Vinyl Dual Glazed Single Hung Windows with Grids	Drawer Over Door Base Cabinets
Double 2" X 4" Mate Walls	Wire Shelf at Washer/Dryer Area
Stomped Finish Ceilings With Decorative Rosette at Fans and Dining Room Light	PEX Fresh Water Lines-Stubbed Through Floor Only
1/2" Finished Drywall Throughout	Drain Lines-Stubbed Through Floor Only
White Flat Panel Embossed Interior Doors with Non-Mortised Door Hinges	Shut-off Valves Throughout
Door and Window Jambs with Reveal	Plumb, Wire and Vent for Washer/Dryer
2" Colonial Door and Window Casing	40 Gallon Electric Water Heater
3-1/4" Colonial Baseboard Molding	100 Amp Service Panel
3-5/8" Cove Molding	Smoke Detectors Per Vermont Code
Wire Shelving in Closets and Pantries	Two G.F.I. Exterior Receptacles
Deluxe White Coach Light at Each Exterior Door	Wire for Electric Range
Domed Ceiling Light in Each Bedroom	Panel Box is Installed or Dropped to Basement
Power Lighted Vent for Bathrooms	Furnace Compartment with Metal Louvered Doors
Vinyl Floor in Kitchen, Utility, Bathrooms and Foyer	Water Heater Compartment with Access Panel
25 oz. "New Day" Carpet with Tack Strip Installation	1 Exterior Faucet

www.GoVillageHomes.com

